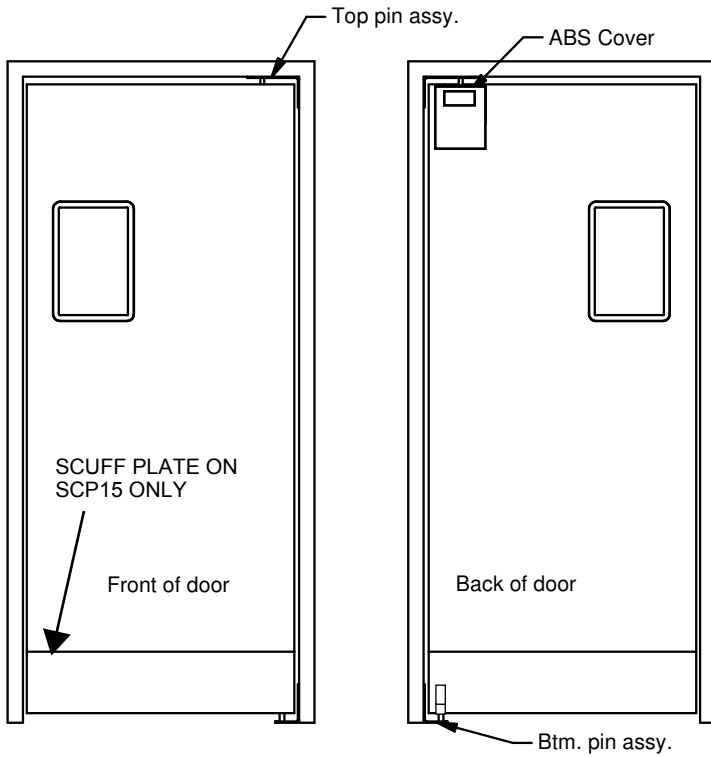


INSTALLATION INSTRUCTIONS & PART DIAGRAM

Eliason® *Easy Swing*® Double Action Doors

SCP15/EHH3 HARDWARE

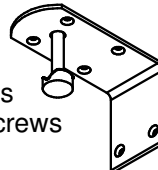


JAMB MUST BE SQUARE AND PLUMB
A MINIMUM OF 3-1/2 INCH WIDE JAMBS
REQUIRED TO MOUNT HARDWARE

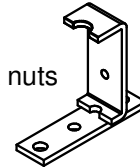
RECOMMENDED EQUIPMENT:
 (2) 7/16" SOCKET WRENCH
 (2) 1/2" SOCKET WRENCH
 LEVER

1. Measure width and height of framed opening and compare width dimensions given at time of ordering. (This model was cut to the dimensions given by the customer and is not adaptable to fit into a different size opening.)
2. Position bottom pin assembly in desired location on floor and center on jamb. Secure to jamb using (4) 1-1/2" screws supplied. Secure to floor with (2) 3/8" rawl bolts.
3. Slip door over bottom pin and lift slightly, with lever if available, to slide door pod over bearing plate (see illustration). Line up holes and insert bolts supplied. Partially install lock nuts, move door to closed position and secure lock nuts.
4. Install the ABS cover on the back side of door with screws provided.

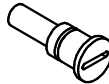
150-124 -- Top Pin Assy
 (6) 1/4" - 20 x 1" phil. flt hd. thread cutting screws
 (6) #14 - 1-1/2" phil. flt hd. sheet metal / wood screws



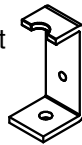
100-55 -- Bearing Plate with (2) 5/16" - 18 x 3/4" cap screws and (2) 5/16" - 18 lock nuts



170-68 -- (2) Axles with (2) 1/4" - 20 lock nut



100-54 -- (1) Retaining Bracket



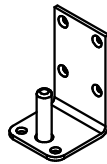
170-30 -- (2) Rollers



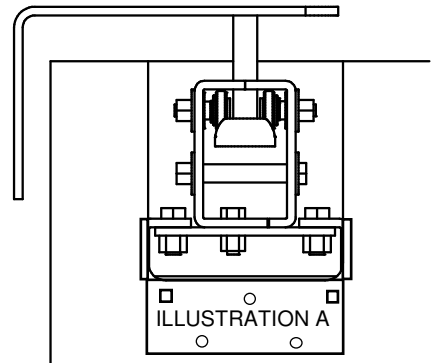
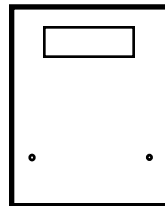
170-28 -- (2) Klip rings



150-54 -- Bottom Pin Asm. (4) of each fastener listed under 150-124 & (2) floor Anchors



170-6040 -- (1) Black ABS Cover, (2) screws,
 (1) Label



ELIASON
 CORPORATION

www.eliasoncorp.com
 9229 Shaver road, Kalamazoo, MI 49003
 Telephone: 269-327-7003 / 800-828-3655
 Fax: 269-327-7006 / 800-828-3577
 E-mail: doors@eliasoncorp.com

INSTALLATION INSTRUCTIONS & PART DIAGRAM

Eliason® *Easy Swing*® Double Action Doors

INSTALLATION CHECK LIST

PROBLEM: Door(s) will not return to closed or centered position.

- 1) Is finished door opening size correct? Is the opening square and plumb?
If not, try to align by shimming behind either top or bottom hardware - or both.
- 2) Is there a significant difference in air pressure on one side of the door?
If yes, contact factory for suggestions.
- 3) Make sure rollers in top hardware assembly are lubricated and turn freely.
See Maintenance Guide below.
- 4) Confirm the top hardware bearing plate is correctly located in the door pod.
See illustration A.

PROBLEM: Door comes off bottom pin when fully opened.

- 1) Check for correct finished opening height. Check Packing Tag on shipping carton.
Minor adjustments can be made by shimming under bottom hardware assembly.

PROBLEM: Excessive gap between doors.

- 1) Doors are designed with an operating tolerance. If excessive, check finished opening width and compare it to opening size on order. Consult factory.

PROBLEM: Opening too small.

- 1) The opening must be adjusted.

PROBLEM: Door unit makes noise during operation.

- 1) Make sure top hardware rollers are lubricated. See Maintenance Guide below.
Note: There is a design clearance incorporated in the bottom hardware assembly (Bottom pin and door bottom leaf), and therefore some movement is normal.

Note: Lost fasteners can be purchased from local lumber or hardware stores.

MAINTENANCE GUIDE

LUBRICATION: Use only suitable grease (such as Lubriplate or White Grease) to lubricate top rollers, and bottom pin. **DO NOT USE OIL OR GRAPHITE BASED PRODUCTS.**
Lubricate as needed.

CLEANING THE DOOR SURFACE: Clean plastic, laminate, aluminum, and stainless steel surfaces with non-corrosive and non-abrasive products. Cleaning products intended for appliances work well.

FOR ASSISTANCE CALL: ELIASON CORPORATION
(Please refer to model ENG-1) KALAMAZOO, MI 1-800-828-3655

ELIASON[®]
CORPORATION

www.eliasoncorp.com
9229 Shaver road, Kalamazoo, MI 49003
Telephone: 269-327-7003 / 800-828-3655
Fax: 269-327-7006 / 800-828-3577
E-mail: doors@eliasoncorp.com