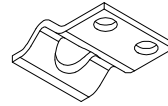
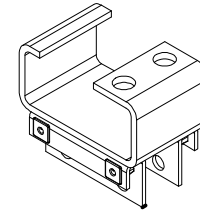


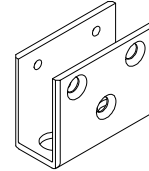
**TOP PIN - BEARING  
PLATE ASSEMBLY**  
PART # : 150-14-1  
QTY: \_\_\_\_\_



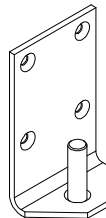
**BEARING PLATE**  
PART # : 100-874  
QTY: \_\_\_\_\_



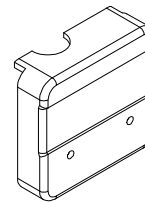
**TOP BRACKET**  
PART # : 150-10  
QTY: \_\_\_\_\_



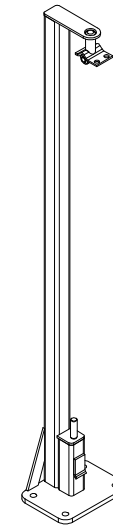
**BOTTOM LEAF**  
PART # : 100-618  
QTY: \_\_\_\_\_



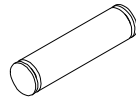
**BOTTOM PIN**  
PART # : 150-16  
QTY: \_\_\_\_\_



**COVERS**  
 ABS: RH # 170-18508-3 AND  
LH # 170-18608-3  
 SS: RH # 100-898SS-3 AND  
LH # 100-899SS-3  
QTY: \_\_\_\_\_



**GATE POST**  
 UP TO 43" PART # : 150-1000-1  
 43" TO 54" PART # : 150-1008-1  
 5 GUYS POST: 150-1020-1  
 STARBUCKS POST: 150-1007-1  
QTY: \_\_\_\_\_




**AXLE**  
PART # : 170-31  
QTY: \_\_\_\_\_



**KLIPRING**  
PART # : 170-28  
QTY (2 PER DOOR): \_\_\_\_\_



**ROLLER**  
PART # : 170-30  
QTY (2 PER DOOR): \_\_\_\_\_

<b>SCP CAFE PART REPLACEMENTS</b>				
<b>SCALE:</b> N/A		<b>MATERIAL:</b> N/A		<b>ITEM NUMBER:</b>  N/A
<b>REV #:</b> 0	<b>DWG BY:</b> BARCLAY	<b>DATE:</b> 2-17-2016	<b>ECN:</b> N/A	