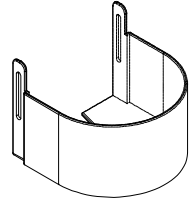
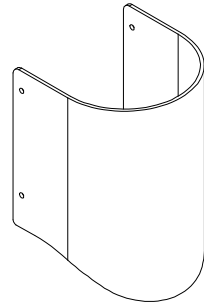


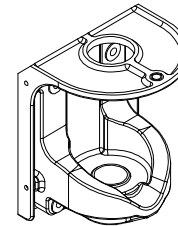
**ROLLER ASSEMBLY WITH STAINLESS STEEL BEARING**

PART # : D05AS5508C  
QTY: \_\_\_\_\_



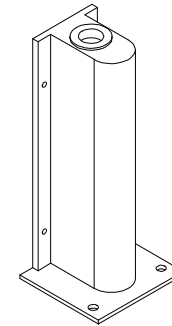
**UPPER HINGE SEAL KIT**

UPPER WRAP PART # : D05PPHSRAP  
 LOWER CUP PART # : D05PPUHCUP  
QTY: \_\_\_\_\_



**V-CAM HINGE ASSEMBLY ONE PIECE FULL COMPOSITE**

PART # : D05AS55290  
QTY: \_\_\_\_\_



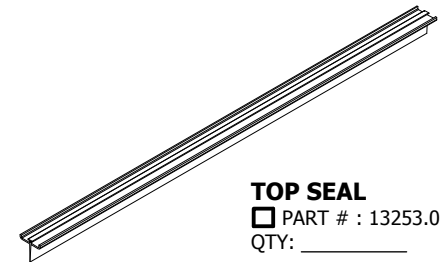
**ALUMINUM JAMB GUARD**

PART # : D05ASHGRTC  
QTY: \_\_\_\_\_



**SPINE EDGE GASKET**

PART # : D07GS01525  
QTY: \_\_\_\_\_



**TOP SEAL**

PART # : 13253.00  
QTY: \_\_\_\_\_



**BOTTOM AND SWING EDGE GASKET**

BOTTOM GASKET PART # : 170-43  
 SWING GASKET PART # : 170-43  
LENGTH: \_\_\_\_\_ FT

COMMON SIZE WINDOWS	CLEAR ACRYLIC WINDOW	GASKET #	QTY.
9" X 14"	100-1459	170-42-11	
14" X 16"	100-1460	170-42-23	
15" X 20"	100-1461	170-42-25	
SPECIFY OTHER WINDOWS			QTY.
SIZE:		MATERIAL:	
*STYLE:			
OTHER NOTES:			

\* STYLE INDICATES THE METHOD USED TO ATTACH THE WINDOW.  
EXAMPLE: GASKET, FRAME, ETC.

<b>RTS9000 PART REPLACEMENTS</b>		
<b>SCALE:</b> N/A	<b>MATERIAL:</b> N/A	<b>ITEM NUMBER:</b> N/A
<b>REV #:</b> 0	<b>DWG BY:</b> BARCLAY	<b>DATE:</b> 2-24-2016
	<b>ECN:</b> N/A	