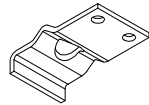


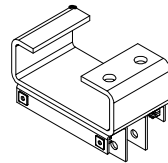
TOP PIN - BEARING PLATE ASSEMBLY

ZINC PART # : 150-118-2
 SS PART # : 150-118SS-2
 QTY: _____



BEARING PLATE

ZINC PART # : 100-50
 SS PART # : 100-50SS
 QTY: _____



TOP POD ASSEMBLY

ZINC PART # : 150-113
 SS PART # : 150-113SS
 QTY: _____



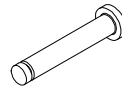
ROLLER

PART # : 170-60
 QTY (2 PER DOOR): _____



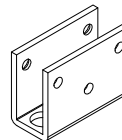
KLIPRING

PART # : 170-28
 QTY: _____



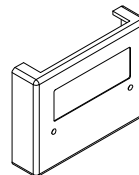
AXLE

PART # : 170-58
 QTY: _____



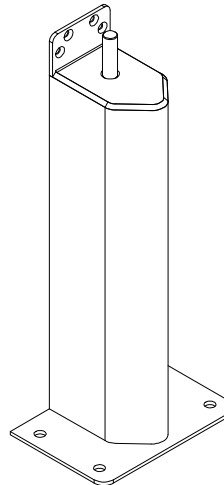
BOTTOM LEAF

ZINC PART # : 100-608
 SS PART # : 100-608SS
 QTY: _____



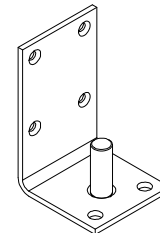
ABS COVER

PART # : 170-18208-3
 QTY (2 PER DOOR): _____



3" X 9" JAMB GUARD

ZINC PART # : 150-76-2
 SS PART # : 150-80SS-1
 QTY: _____



5" X 18" JAMB GUARD

ZINC PART # : 150-79-2
 SS PART # : 150-81SS-1
 QTY: _____

BOTTOM PIN

ZINC PART # : 150-47
 SS PART # : 150-47SS
 QTY: _____

COMMON SIZE WINDOWS	CLEAR ACRYLIC WINDOW	GASKET #	QTY.
9" X 14"	100-1459	170-44-11	
14" X 16"	100-1460	170-44-23	
15" X 20"	100-1461	170-44-25	
10" ROUND	100-1452	170-44-17	
SPECIFY OTHER WINDOWS			QTY.
SIZE:		MATERIAL:	
*STYLE:			
OTHER NOTES:			

* STYLE INDICATES THE METHOD USED TO ATTACH THE WINDOW.
 EXAMPLE: GASKET, FRAME, ETC.

PMP-2 PART REPLACEMENTS			
SCALE: N/A		MATERIAL: N/A	
ITEM NUMBER: N/A			

REV #: 0	DWG BY: BARCLAY	DATE: 2-17-2016	ECN: N/A
--------------------	---------------------------	---------------------------	--------------------