


THE ELIASON® FX-9000

# Your Best Choice for Heavy Duty Applications.



Optional  
High Impact  
Spring Bumpers  
Shown

## FX-9000 IMPACT TRAFFIC DOOR

The Eliason FX-9000 door is custom manufactured to fit your opening size and is ideally suited for applications where heavy forklift traffic is present. The FX-9000 is built with an extra heavy duty internal welded steel frame, welded internal reinforcements at the window locations and a full perimeter extruded PVC outer frame which is bonded to the impact-resistant ABS cladding to create one of the toughest industrial traffic doors available. FX-9000 doors operate on the Eliason V-Cam hinging system with ductile iron hinge posts, stainless steel V-Cams and permanently sealed roller bearings.



ELIASON®

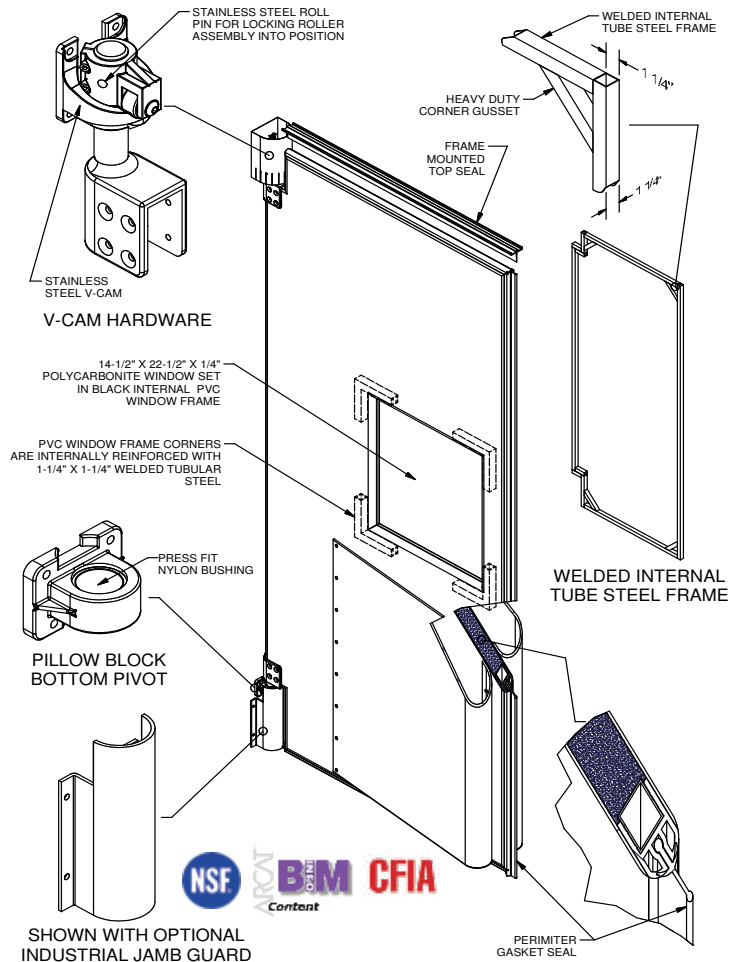
# Eliason FX-9000 Doors

product features  
& specifications

## Quality Engineering Proven Over Time

- The FX-9000 features an extra heavy duty reinforced internal steel frame combined with a full perimeter extruded PVC frame to ensure door panel strength and integrity.
- The .100" ABS thermoplastic cladding is bonded to the full perimeter extruded PVC exterior frame, creating a panel that is impervious to moisture, acid, petroleum products, animal fat and salt solutions.
- The FX-9000 features extra heavy duty stainless steel V-Cams, ductile iron upper and lower hinge posts and permanently sealed roller bearings to ensure smooth, reliable operation in the toughest and most demanding environments.
- The FX-9000 is available with optional spring assist for high draft applications, aluminum or steel lower hinge guards, 180 degree V-Cam hardware and Easy Spring Bumpers.
- Tough impact and abrasion resistant bumpers are available in Surlyn™ or molded polyethylene in heights up to 48". Great impact resistance, even at low temperatures.

CFC-Free urethane foam core provides excellent thermal and sound abatement properties.



## Specifications

**DOOR BODY:** Full perimeter extra heavy duty welded internal steel frame made of 1-1/4" square welded steel tubing with additional 1-1/4" square welded steel gussets in the corners and at the window locations. The internal steel frame is covered with a tough extruded PVC external frame. Impact-resistant ABS thermoplastic cladding is bonded to the external PVC frame and the door is foamed in place with CFC-Free urethane foam for excellent thermal and sound abatement properties. Gasket seals are provided on the vertical and bottom edges of the door panel along with a frame mounted top seal.

**FINISH:** .100" thick impact-resistant ABS thermoplastic.

**HINGES:** Extra heavy duty stainless steel V-Cams with nylon bushings, ductile iron upper and lower hinge posts, ductile iron lower pillow block with nylon bushing and permanently sealed roller bearings.

**WINDOWS:** Impact-resistant polycarbonate vision panel set in sealed internal rigid PVC frame and internally reinforced with 1-1/4" welded square steel tubing. Standard size is 14-1/2" x 22-1/2". Consult factory for additional size options.

**OPTIONS:** Optional Easy Spring Bumpers (Surlyn™ or molded polyethylene), aluminum or steel jamb guards; spring assist; and 180 degree V-Cam hinges.

## Available Colors:

		Metallic Gray	Navy
Cloud Gray	Beige	Medium Brown	Royal Blue
Chocolate Brown	Antique White	Forest Green	Cadet Blue
Black	Red	White	



Over 60 Years Strong • [www.eliasoncorp.com](http://www.eliasoncorp.com) • (800) 828-3655



9229 SHAVER ROAD, KALAMAZOO, MI 49024 • FAX (800) 828-3577