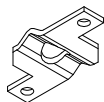


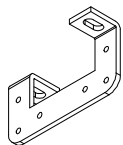
**TOP PIN - BEARING  
PLATE ASSEMBLY**

ZINC PART # : 150-118-1  
 SS PART # : 150-118SS-1  
 QTY: \_\_\_\_\_



**BEARING PLATE**

ZINC PART # : 100-52  
 SS PART # : 100-52SS  
 QTY: \_\_\_\_\_



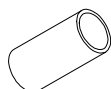
**TOP BRACKET**

ZINC PART # : 100-166  
 SS PART # : 100-166SS  
 QTY: \_\_\_\_\_



**ROLLER**

PART # : 170-60  
 QTY (2 PER DOOR): \_\_\_\_\_

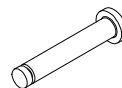


**BOTTOM PIN - JAMB  
GUARD BUSHING**

PART # : 100-596  
 QTY: \_\_\_\_\_

COMMON SIZE WINDOWS	CLEAR ACRYLIC WINDOW	GASKET #	QTY.
9" X 14"	100-1503	170-17-35	
14" X 16"	100-1502	170-17-22	
9" X 30"	100-1504	170-17-12	
10" ROUND	100-1498	170-17-16	
SPECIFY OTHER WINDOWS			QTY.
SIZE:		MATERIAL:	
*STYLE:			
OTHER NOTES:			

\* STYLE INDICATES THE METHOD USED TO ATTACH THE WINDOW.  
 EXAMPLE: GASKET, FRAME, ETC.



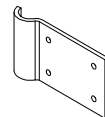
**AXLE**

PART # : 170-58  
 QTY: \_\_\_\_\_



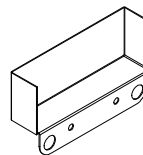
**KLIPRING**

PART # : 170-28  
 QTY: \_\_\_\_\_



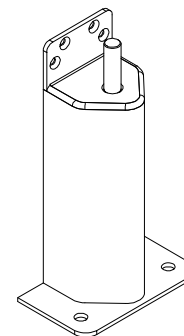
**BOTTOM LEAF  
(2 PER DOOR)**

ZINC PART # : 100-878  
 SS PART # : 100-878SS  
 QTY: \_\_\_\_\_



**COVERS  
(2 PER DOOR)**

ALUM PART # : 100-1107-3  
 SS PART # : 100-1107SS-3  
 QTY: \_\_\_\_\_



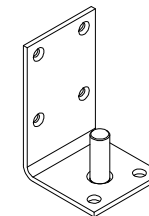
**3" X 9" JAMB GUARD**

ZINC PART # : 150-76-2  
 SS PART # : 150-80SS-1  
 QTY: \_\_\_\_\_

**5" X 18" JAMB GUARD**

ZINC PART # : 150-79-2  
 SS PART # : 150-81SS-1  
 QTY: \_\_\_\_\_

JAMB GUARDS NOT AVAILABLE FOR DSP3



**BOTTOM PIN**

ZINC PART # : 150-47  
 SS PART # : 150-47SS  
 QTY: \_\_\_\_\_

<b>LWP / DSP PART REPLACEMENTS</b>				
<b>SCALE:</b> N/A	<b>MATERIAL:</b> N/A			<b>ITEM NUMBER:</b> N/A
<b>REV #:</b> 0	<b>DWG BY:</b> BARCLAY	<b>DATE:</b> 2-17-2016	<b>ECN:</b> N/A	