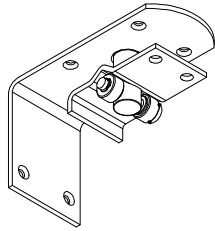
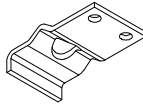


NOTE:
DOOR SHOWN WITH FULL
PERIMETER GASKET



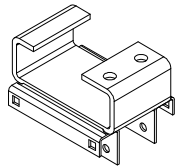
**TOP PIN - BEARING
PLATE ASSEMBLY**

ZINC PART # : 150-118-3
 SS PART # : 150-118SS-3
QTY: _____



BEARING PLATE

ZINC PART # : 100-50
 SS PART # : 100-50SS
QTY: _____



TOP POD ASSEMBLY

ZINC PART # : 150-111
 SS PART # : 150-111SS
QTY: _____



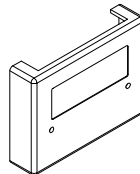
ROLLER

PART # : 170-60
QTY (2 PER DOOR): _____



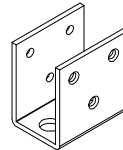
KLIPRING

PART # : 170-28
QTY: _____



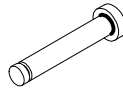
COVER

ABS PART # : 170-18208-3
QTY: _____



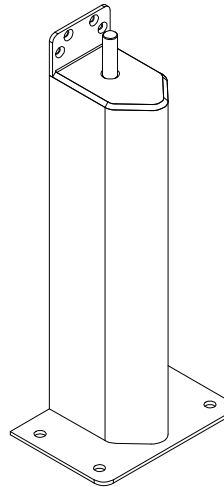
BOTTOM LEAF

ZINC PART # : 100-607
 SS PART # : 100-607SS
QTY: _____



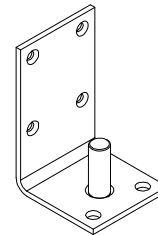
AXLE

PART # : 170-58
QTY: _____



3" X 9" JAMB GUARD

ZINC PART # : 150-76-2
 SS PART # : 150-80SS-1
QTY: _____



5" X 18" JAMB GUARD

ZINC PART # : 150-79-2
 SS PART # : 150-81SS-1
QTY: _____

BOTTOM PIN

ZINC PART # : 150-47
 SS PART # : 150-47SS
QTY: _____

COMMON SIZE W I N D O W S	CLEAR ACRYLIC W I N D O W	GASKET #	QTY.
9" X 14"	100-1459	170-42-11	
14" X 16"	100-1460	170-42-23	
15" X 20"	100-1461	170-42-25	
SPECIFY OTHER W I N D O W S			QTY.
SIZE:		MATERIAL:	
*STYLE:			
OTHER NOTES:			

* STYLE INDICATES THE METHOD USED TO ATTACH THE WINDOW.
EXAMPLE: GASKET, FRAME, ETC.



JAMB AND BOTTOM EDGE GASKET

JAMB GASKET PART # : 170-43
 BOTTOM GASKET PART # : 170-43
LENGTH: _____ FT

SWING AND TOP MITERED GASKET*

OPENING SIZES UP TO 32 X 84 PART #: 170-38
 SIZES BETWEEN 32 X 84 AND 44 X 96 PART #: 170-39
 SIZES LARGER THAN 44 X 96 PART #: 170-40
QTY: _____

*IF EITHER WIDTH OR HEIGHT IS OUT OF PART RANGE,
CHOOSE THE LARGER PART SIZE.

HCG PART REPLACEMENTS				
SCALE: N/A	MATERIAL: N/A			ITEM NUMBER: N/A
REV #: 0	DWG BY: BARCLAY	DATE: 2-24-2016	ECN: N/A	