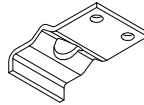


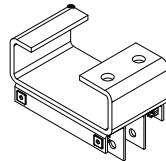
**TOP PIN - BEARING
PLATE ASSEMBLY**

- ZINC PART # : 150-118-3
 - SS PART # : 150-118SS-3
- QTY: _____



BEARING PLATE

- ZINC PART # : 100-50
 - SS PART # : 100-50SS
- QTY: _____



TOP POD ASSEMBLY

- ZINC PART # : 150-113
 - SS PART # : 150-113SS
- QTY: _____



**BOTTOM EDGE
GASKET**

PART # : 170-43
LENGTH: _____ FT

SWING AND TOP MITERED GASKET*

- OPENING SIZES UP TO 32 X 84 PART # : 170-38
 - SIZES BETWEEN 32 X 84 AND 44 X 96 PART # : 170-39
 - SIZES LARGER THAN 44 X 96 PART # : 170-40
- QTY: _____



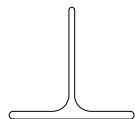
ROLLER

PART # : 170-60
QTY (2 PER DOOR): _____



KLIPRING

PART # : 170-28
QTY: _____

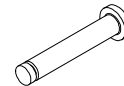


JAMB GASKET

PART # : 170-74-6
QTY: _____

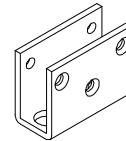
COMMON SIZE WINDOWS		CLEAR ACRYLIC WINDOW	GASKET #	QTY.
9" X 14"		100-1459	170-36-11	
14" X 16"		100-1460	170-36-23	
9" X 30"		100-1438	170-36-13	
10" ROUND		100-1452	170-36-17	
SPECIFY OTHER WINDOWS				QTY.
SIZE:		MATERIAL:		
*STYLE:				
OTHER NOTES:				

* STYLE INDICATES THE METHOD USED TO ATTACH THE WINDOW.
EXAMPLE: GASKET, FRAME, ETC.



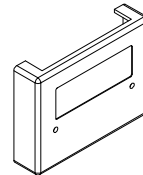
AXLE

PART # : 170-58
QTY: _____



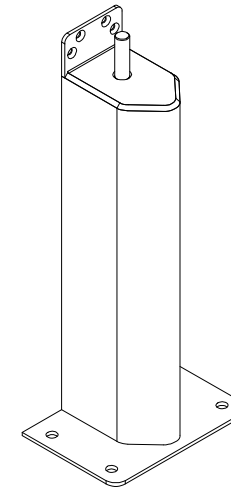
BOTTOM LEAF

- ZINC PART # : 100-608
 - SS PART # : 100-608SS
- QTY: _____



COVER

PART # : 170-18208-3
QTY (2 PER DOOR): _____

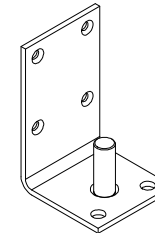


3" X 9" JAMB GUARD

- ZINC PART # : 150-76-2
 - SS PART # : 150-80SS-1
- QTY: _____


5" X 18" JAMB GUARD

- ZINC PART # : 150-79-2
 - SS PART # : 150-81SS-1
- QTY: _____



BOTTOM PIN

- ZINC PART # : 150-47
 - SS PART # : 150-47SS
- QTY: _____

G11 PLUS PART REPLACEMENTS					
SCALE: N/A		MATERIAL: N/A		ITEM NUMBER: N/A	
REV #: 0	DWG BY: BARCLAY	DATE: 2-17-2016	ECN: N/A		

*IF EITHER WIDTH OR HEIGHT IS OUT OF PART RANGE,
CHOOSE THE LARGER PART SIZE.