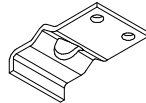


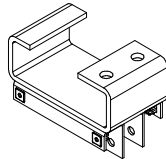
**TOP PIN - BEARING
PLATE ASSEMBLY**

ZINC PART # : 150-118-3
 SS PART # : 150-118SS-3
 QTY: _____



BEARING PLATE

ZINC PART # : 100-50
 SS PART # : 100-50SS
 QTY: _____



TOP POD ASSEMBLY

ZINC PART # : 150-111
 SS PART # : 150-111SS
 QTY: _____

JAMB EDGE GASKET

PART # : 170-43
 LENGTH: _____ FT

SWING AND TOP MITERED GASKET*

OPENING SIZES UP TO 32 X 84 PART # : 170-38
 SIZES BETWEEN 32 X 84 AND 44 X 96 PART # : 170-39
 SIZES LARGER THAN 44 X 96 PART # : 170-40
 QTY: _____



ROLLER

PART # : 170-60
 QTY (2 PER DOOR): _____

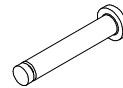


KLIPRING

PART # : 170-28
 QTY: _____

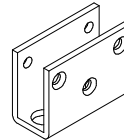
COMMON SIZE WINDOWS		CLEAR ACRYLIC WINDOW	GASKET #	QTY.
9" X 14"		100-1459	170-42-11	
14" X 16"		100-1460	170-42-23	
15" X 20"		100-1461	170-42-25	
SPECIFY OTHER WINDOWS				QTY.
SIZE:		MATERIAL:		
*STYLE:				
OTHER NOTES:				

* STYLE INDICATES THE METHOD USED TO ATTACH THE WINDOW.
 EXAMPLE: GASKET, FRAME, ETC.



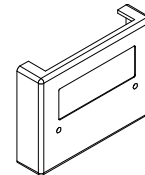
AXLE

PART # : 170-58
 QTY: _____



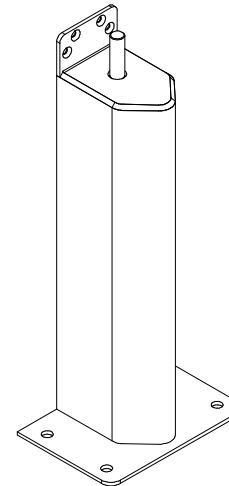
BOTTOM LEAF

ZINC PART # : 100-607
 SS PART # : 100-607SS
 QTY: _____



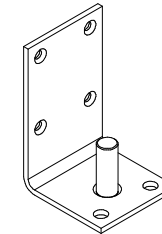
COVER

SS PART # : 100-1105SS-3
 QTY (2 PER DOOR): _____



3" X 9" JAMB GUARD

ZINC PART # : 150-76-2
 SS PART # : 150-80SS-1
 QTY: _____



5" X 18" JAMB GUARD

ZINC PART # : 150-79-2
 SS PART # : 150-81SS-1
 QTY: _____

BOTTOM PIN

ZINC PART # : 150-47
 SS PART # : 150-47SS
 QTY: _____

*IF EITHER WIDTH OR HEIGHT IS OUT OF PART RANGE,
 CHOOSE THE LARGER PART SIZE.

BOTTOM GASKET

PART # : 170-03301
 LENGTH: _____ FT

FCG1, 3, AND 5 PART
 REPLACEMENTS

ELIASON[®]
 CORPORATION

SCALE: N/A	MATERIAL: N/A			ITEM NUMBER: N/A
REV #: 1	DWG BY: BARCLAY	DATE: 11/16/2016	ECN: N/A	