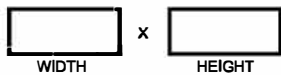
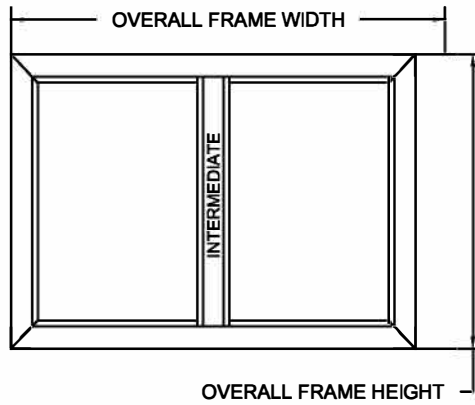


OVERALL FRAME HEIGHT

OVERALL FRAME SIZE

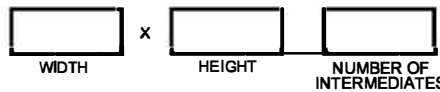


ROUGH OPENING = OVERALL FRAME PLUS 1/4" ALL AROUND TO ALLOW FOR SHIMS.

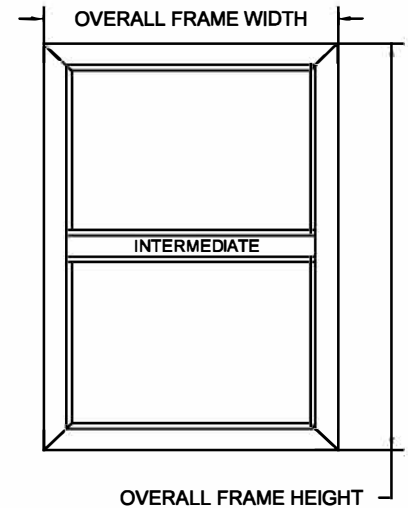


OVERALL FRAME HEIGHT

OVERALL FRAME SIZE



ROUGH OPENING = OVERALL FRAME PLUS 1/4" ALL AROUND TO ALLOW FOR SHIMS.



OVERALL FRAME HEIGHT

OVERALL FRAME SIZE



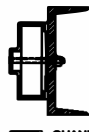
ROUGH OPENING = OVERALL FRAME PLUS 1/4" ALL AROUND TO ALLOW FOR SHIMS.



NEW MASONRY



EXISTING MASONRY



STEEL CHANNEL

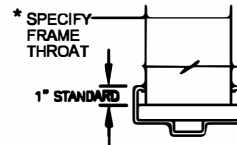


WOOD/METAL STUD



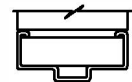
WOOD/METAL STUD

WALL TYPE



* SPECIFY FRAME THROAT
1" STANDARD

WRAP*



BUTTED

(NEW CONSTRUCTION ONLY)

FRAME CONFIGURATION

TIGER SERIES

HEAVY DUTY

EXTREME DUTY

FIRE RATED

20 MIN ___ 30 MIN ___ 45 MIN ___

60 MIN ___ 90 MIN ___

WIND LOAD RATED

DESIGN PRESSURE ___ PSF

COLOR

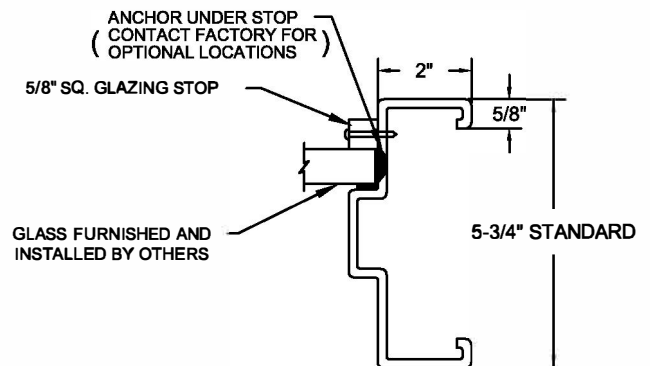
POLAR WHITE

CASHEW TAN

MIST GRAY

PRIMER

OTHER _____



GLAZING PLACEMENT



800.828.3655

CUSTOMER NOTES: _____

FIXED WINDOW

CUSTOMER: _____

PROJECT: _____

DOOR MARK: _____