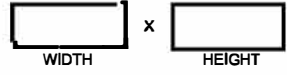


OVERALL FRAME HEIGHT

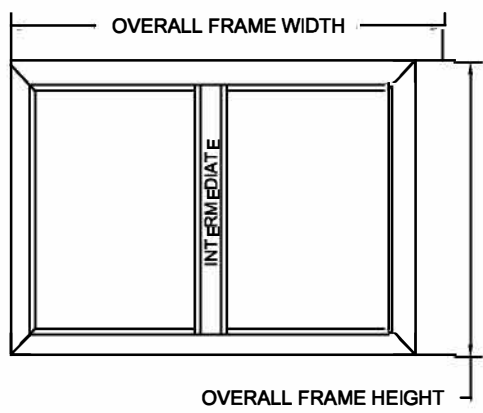
OVERALL FRAME WIDTH

OVERALL FRAME SIZE



WIDTH x HEIGHT

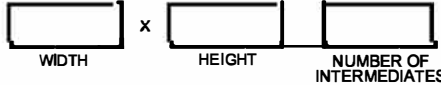
ROUGH OPENING = OVERALL FRAME PLUS 1/4" ALL AROUND TO ALLOW FOR SHIMS.



OVERALL FRAME HEIGHT

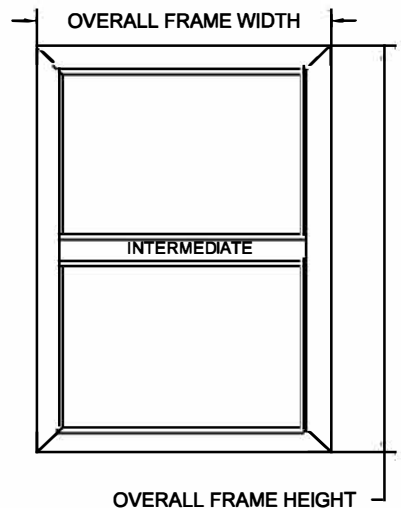
OVERALL FRAME WIDTH

OVERALL FRAME SIZE



WIDTH x HEIGHT NUMBER OF INTERMEDIATES

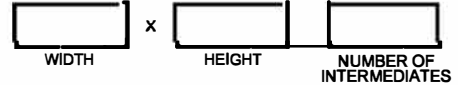
ROUGH OPENING = OVERALL FRAME PLUS 1/4" ALL AROUND TO ALLOW FOR SHIMS.



OVERALL FRAME HEIGHT

OVERALL FRAME WIDTH

OVERALL FRAME SIZE



WIDTH x HEIGHT NUMBER OF INTERMEDIATES

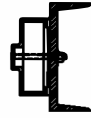
ROUGH OPENING = OVERALL FRAME PLUS 1/4" ALL AROUND TO ALLOW FOR SHIMS.



NEW MASONRY



EXISTING MASONRY



STEEL CHANNEL

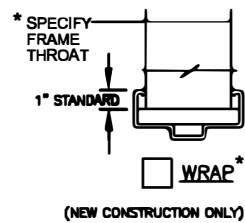


WOOD/METAL STUD

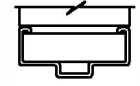


WOOD/METAL STUD

WALL TYPE



WRAP*



BUTTED

(NEW CONSTRUCTION ONLY)

FRAME CONFIGURATION

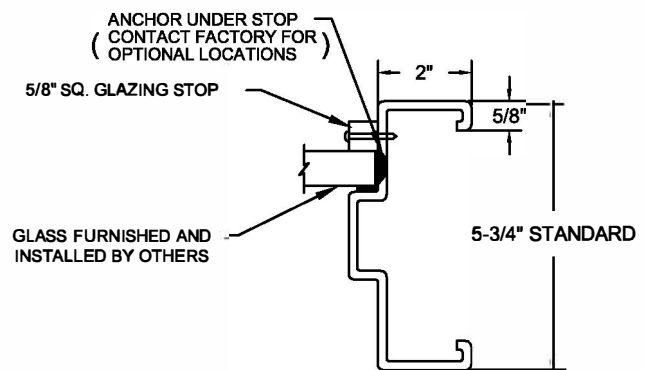
- HEAVY DUTY
- EXTREME DUTY
- FIRE RATED

20 MIN ___ 30 MIN ___ 45 MIN ___
60 MIN ___ 90 MIN ___

- WIND LOAD RATED
- DESIGN PRESSURE PSF

COLOR

- POLAR WHITE
- CASHEW TAN
- MIST GRAY
- PRIMER
- OTHER _____



GLAZING PLACEMENT



800.828.3655

CUSTOMER NOTES: _____

FIXED WINDOW

CUSTOMER: _____
PROJECT: _____
DOOR MARK: _____