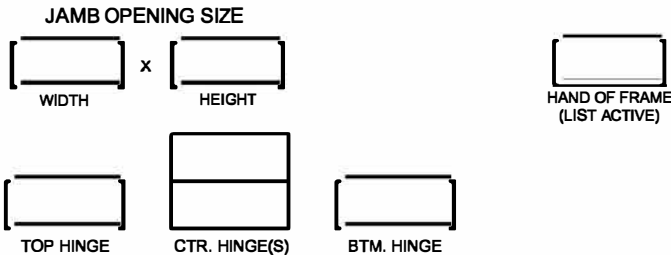
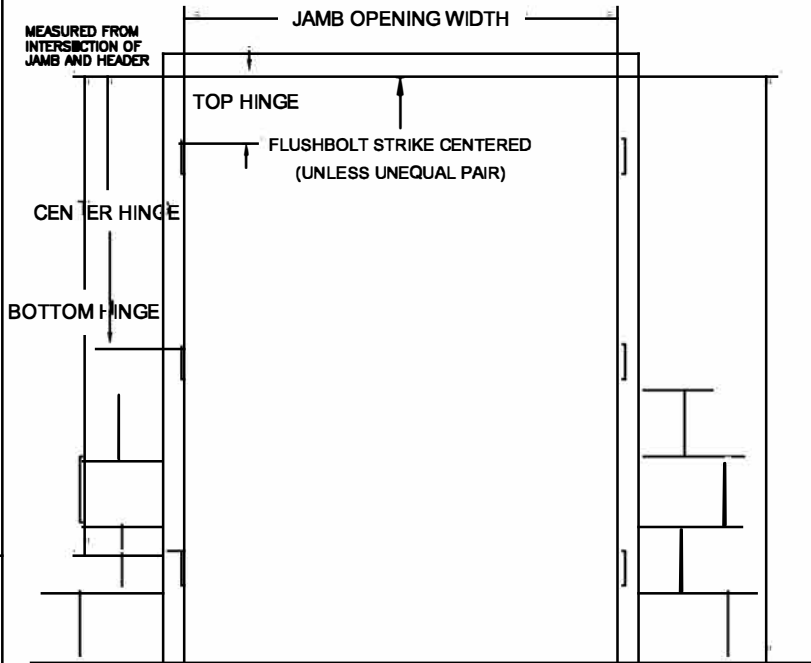


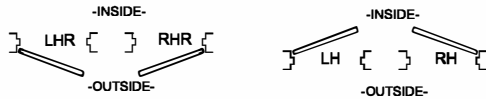
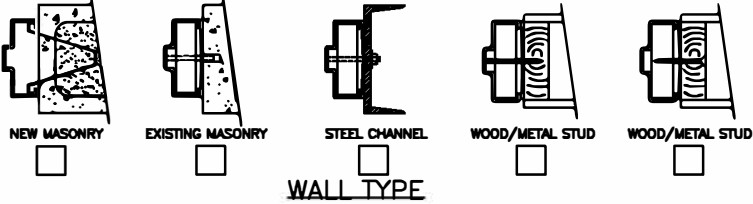
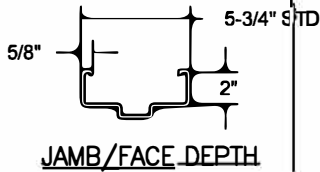
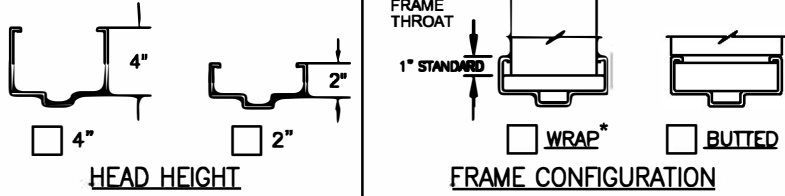
- HEAVY DUTY
- EXTREME DUTY
- FIRE RATED
- 20 MIN \_\_\_ 30 MIN \_\_\_ 45 MIN \_\_\_
- 60 MIN \_\_\_ 90 MIN \_\_\_
- WIND LOAD RATED
- DESIGN PRESSURE \_\_\_\_\_ PSF.

**COLOR**

- POLAR WHITE
- CASHEW TAN
- MIST GRAY
- PRIMER
- OTHER \_\_\_\_\_



ROUGH OPENING:  
OVERALL FRAME PLUS 1/4" ALL AROUND TO ALLOW FOR FRAME SHIMS.



**HARDWARE PREPARATIONS & REINFORCEMENTS**

- 4-1/2" MORTISE HINGES
  - 3  4  5
- 5" MORTISE HINGES
  - 3  4  5
- D** CONTINUOUS HINGE REIN.\*
- FLUSHBOLT STRIKE
- CLOSER REIN.
- SURFACE OH HOLDER/STOP REIN.
- CONCEALED OH HOLDER/S TOP\*
- OTHER\*

\*MAKE & MODEL REQUIRED

CUSTOMER NOTES: \_\_\_\_\_  
 \_\_\_\_\_  
 \_\_\_\_\_  
 \_\_\_\_\_

**DOUBLE FRAME ONLY**

CUSTOMER: \_\_\_\_\_  
 PROJECT: \_\_\_\_\_  
 DOOR MARK: \_\_\_\_\_



800.828.3655